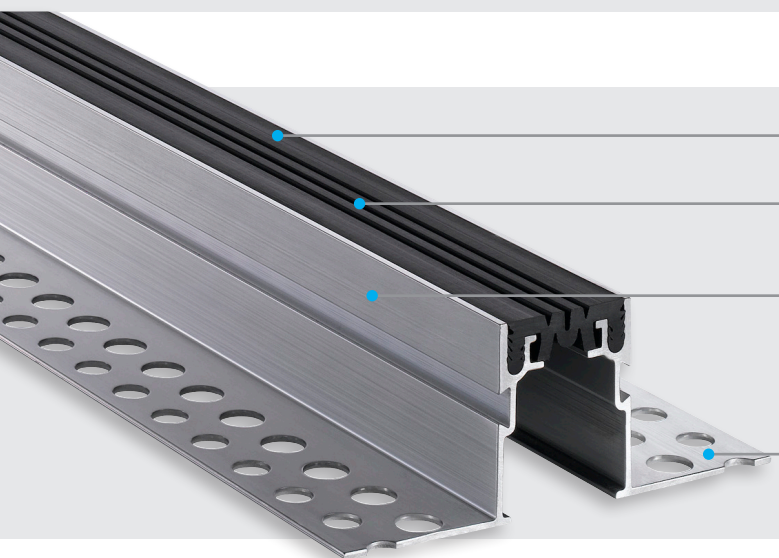


## Floor Profiles

### FV 41



**Flexible high quality elastomeric insert**

Hard wearing, temperature resistant (-30°C to +120°C), replaceable

**Multi directional movement**




**Quick and easy installation**

Solid, but light aluminium brackets for quick installation in screed or tiled floorings

**Flexible adaptation to site conditions**

Available with adjustable installation height

**MultiHole mounting bracket**  
for secure fixing

Profile	Joint width max. <b>b<sub>f</sub> max</b> [mm]	Total Movement <b>Δb<sub>f</sub></b> [mm]	Visible width of profile <b>b<sub>s</sub></b> [mm]	Total width of profile <b>b<sub>t</sub></b> [mm]	Installation height <b>h</b> [mm]	Load capacity*  /  [kN]	Load capacity  [kN]
FV 41/15	35	14 (± 7)	41	114	15	30	-
FV 41/20	35	14 (± 7)	41	114	20	30	-
FV 41/25	35	14 (± 7)	41	114	25	30	-
FV 41/35	35	14 (± 7)	41	131	35	30	-
FV 41/50	35	14 (± 7)	41	131	50	30	-
FV 41/4055	35	14 (± 7)	41	114	40, 45, 50, 55	30	-
FV 41/6075	35	14 (± 7)	41	114	60, 65, 70, 75	30	-
FV 41/7590	35	14 (± 7)	41	114	75, 80, 85, 90	30	-
FV 41/90105	35	14 (± 7)	41	114	90, 95, 100, 105	30	-

\*not designed for permanent use  
For installation in asphalt, please ask for our technical advise.

Standard colours: black, grey, beige

Production length: 4 m

