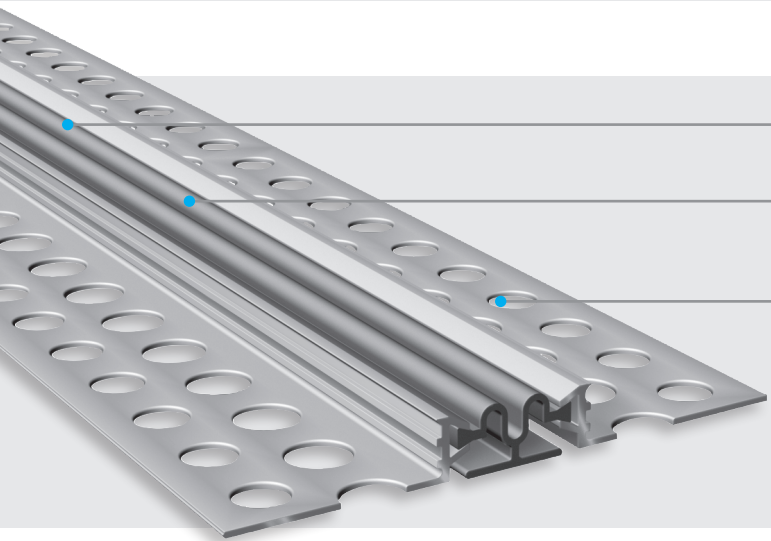


Wall and ceiling profiles / plaster

D 12 / DE 12



Flexible high quality elastomeric insert

Hard wearing, temperature resistant (-30°C to +120°C), replaceable

Large movement capacity

Special flexible folded insert (up to 50 m length)

MultiHole mounting bracket

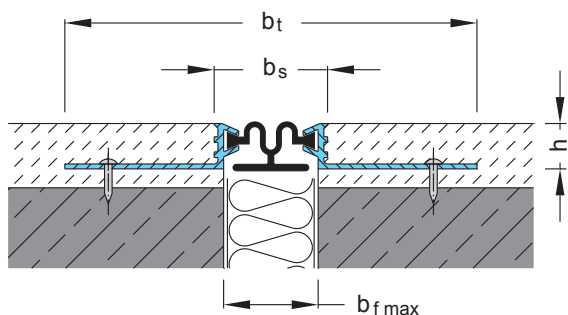
for secure fixing

Profile for straight joints	Joint width max. b_f max [mm]	Total movement Δb_f [mm]	Visible width of profile b_s [mm]	Total width of profile b_t [mm]	Install. height h [mm]
D 12/ 3	30	10 (\pm 5)	32	110	12
D 12/ 5	75	40 (\pm 20)	75	155	12
D 12/ 7	100	50 (\pm 25)	100	180	12
D 12/ 9	150	100 (\pm 50)	150	230	12
D 12/13	200	120 (\pm 60)	200	280	12
D 12/14	250	180 (\pm 90)	250	330	12
D 12/18	350	200 (\pm 100)	350	430	12

Profile for corner joints	Joint width max. b_f max [mm]	Total movement Δb_f [mm]	Visible width of profile b_s [mm]	Total width of profile b_t [mm]	Install. height h [mm]
DE 12/ 4	30	10 (\pm 5)	22	73	12
DE 12/ 6	75	40 (\pm 20)	55	113	12
DE 12/ 8	100	50 (\pm 25)	80	138	12
DE 12/11	150	100 (\pm 50)	125	188	12
DE 12/15	200	120 (\pm 60)	190	238	12
DE 12/16	250	180 (\pm 90)	220	288	12
DE 12/22	350	200 (\pm 100)	390	388	12

Standard colours: grey, D 12/3 and DE 12/4 can also be supplied with a beige insert

Production length: 4 m



Insert for profile D 12/5 and DE 12/6



Insert for profile D 12/7 and DE 12/8



Insert for profile D 12/9 and DE 12/11



Insert for profile D 12/13 and DE 12/15