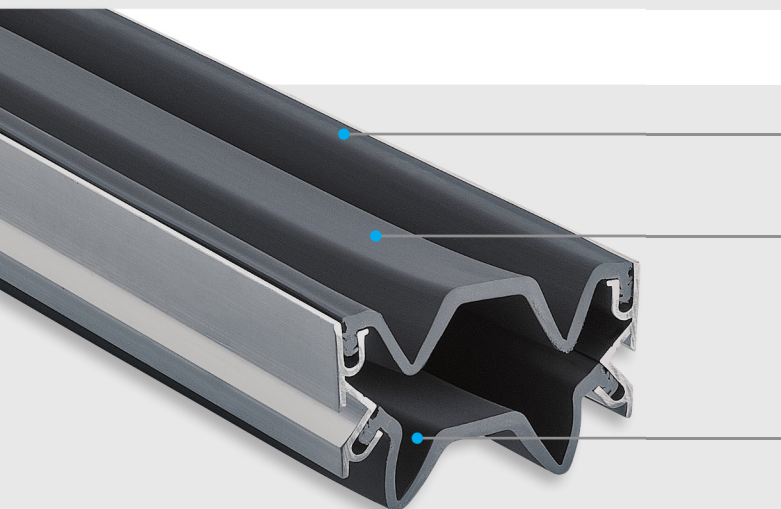


Profiles for walls- and ceilings

WPK 100



Small visible width

for fixing inside the joint for flush installation in walls- and ceilings

Flexible high quality elastomeric insert for internal and external use

Long wearing, weather resistant, temperature resistant (-30°C bis +120°C)

Installation tool available on request

Available without secondary seal on request
e.g. for internal use

Profile	Joint width max. b_f max [mm]	Total movement Δb_f [mm]	Visible width of profile b_s [mm]	Total width of profile b_t [mm]	Installation height h [mm]
WPK 100	100	100 (± 50)	100	100	46

If longer lengths than 4 m are required, exact details of total joint lengths must be stated.

Standard colour: black, grey

Production length: 4 m

