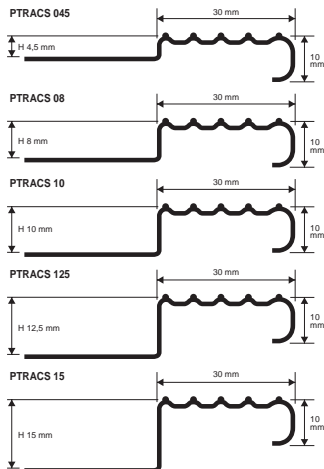


PROSTAIR ACC

SATINED STAINLESS STEEL AISI 304/1.4301-V2A

PROSTAIR ACC is steps protecting technical profile, designed and conceived to make the step scales made of ceramic, porcelain stoneware and others nonskid and non-slip ones ; it's to be applied before the step laying process. Manufactured in aisi 304/1.4301-V2A glazed stainless steel, with the superior side level crimped in order to increase its adhesion. It replaces special ceramic elements in refined, resistant and economic way. It is compulsory in public places for the accident prevention. It is recommended for elegant, refined industrial, commercial and private environments: available in H: 8-10-12,5-15 mm versions. Combining with the entire series of steel profiles recommended.



SATINED STAINLESS STEEL AISI 304/1.4301-V2A with protective film
bar length 2,7 LM - pack. 20 Pcs - 54 LM - 10/10mm

Article	H mm		
PTRACS 045	4,5		
PTRACS 08	8		
PTRACS 10	10		
PTRACS 125	12,5		
PTRACS 15	15		

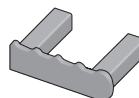
Available in SATINED STAINLESS STEEL AISI 316L/1.440-V4A (available with a minimum quantity order of 540 LM)



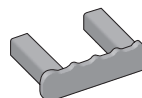
END CAP IN PAINTED PLASTIC STEEL EFFECT

pack. 20 Pcs (10 right and 10 left)

Article	H mm	
TPTRAC 3010 (dx-sx)	10	

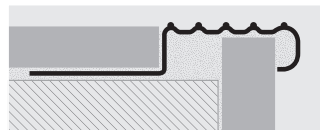


TPTRAC 3010 SX



TPTRAC 3010 DX

EXAMPLES OF LAYING



LAYING INSTRUCTIONS

1: Choose the PROSTAR ACC of the desired height and material on the basis of the tile (steps) thickness. **2:** Fix the first rising part laying it down at its appropriate and definitive level. **3:** Fill completely the empty spaces under the profile with the tile adhesive. **4:** Spread out the adhesive on the tread, lay down the profile with its cut base immersed completely in adhesive and align it so that the profile covers the riser tile edge. **5:** Lay down the tread tiles and align them with the superior grazing part of the profile by drawing its back close and filling the inner space with the adhesive.

COLOURS



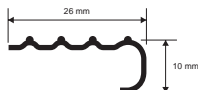
(for a precise assessment of colours and finishes, see the relative enclosed sheet)

PROSTYLE 2610

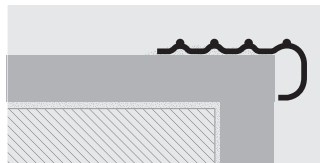
SATINED STAINLESS STEEL AISI 304/1.4301-V2A
SELF ADHESIVE or PUNCHED

PROSTYLE 2610 is steps protecting technical profile, designed and conceived to keep the step scales made of ceramic, porcelain stoneware, wood, marble and others nonskid and non-slip ones ; it's to be applied after the step laying process or in the already present rooms. Manufactured in aisi 304/1.4301-V2A glazed stainless steel, with the superior side level crimped in order to increase its adhesion. It replaces special ceramic elements in refined, resistant and economic way. It's ideal for the edges protection and screening as well as of the corner between the rising and the tread which is the point of the greatest strain. It is compulsory in public places for the accident prevention. It is recommended for elegant, refined industrial, commercial and private environments. Available in drilled version or in with adhesive one.

PSYACS 2610/A



EXAMPLES AND INSTRUCTIONS FOR LAYING METHODS



Adhesive version

1: Choose the suitable profile and cut it to the necessary length. **2:** Degrease, wash and clean the solid surface thoroughly. **3:** Remove the protective paper from the adhesive. **4:** Lay the profile by applying pressure evenly over the whole surface without using a hammer.

Punched version

1: Choose the suitable profile and cut it to the necessary length. **2:** Mark the position of the holes using the existing holes in the profile as reference. **3:** Insert the screw anchors into the drilled holes. **4:** Fix the profile using flathead screws suitable for the relative slots in the profile.



SATINED STAINLESS STEEL AISI 304/1.4301-V2A with protective film
bar length 2,7 LM - pack. 20 Pcs - 54 LM - 10/10mm

Article	H mm		
PSYACS 2610F (punched)	10		
PSYACS 2610A (with adhesive)	10		

Available in SATINED STAINLESS STEEL AISI 316L/1.440-V4A (available with a minimum quantity order of 540 LM)



COLOURS



(for a precise assessment of colours and finishes, see the relative enclosed sheet)

PROSTAIR 50 is a technical square used to make the step nonskid and non-slip, protects the ceramic stairs steps preventing from accidents. It is made up of a rigid ALUMINIUM base equipped with a particular toothing on the vertical stem which strengthens the anchorage of the adhesive to the square. The aluminium base varies according to the thickness of the tile used in the step, and to a lined interchangeable insert in vinyl rubber available in several colors. The insert is already applied to the aluminium base. It is compulsory in public places in compliance with EEC norms and prevents from accidents.

PROSTAIR 50

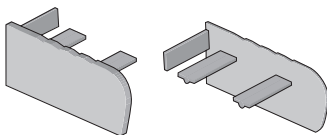
NATURAL ALUMINIUM
+ VINYL RESIN / RUBBER INSERT



NATURAL ALUMINIUM + VINYL RESIN / RUBBER INSERT
bar length 2,7 LM - pack. 20 Pcs - 54 LM

Article	H mm		
PTR50 08...	8		
PTR50 10...	10		
PTR50 125...	12,5		
PTR50 15...	15		

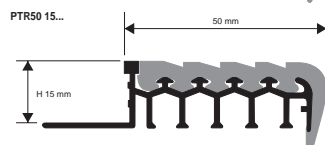
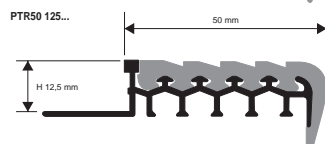
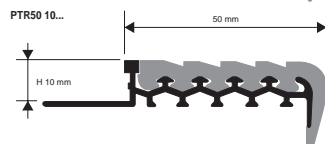
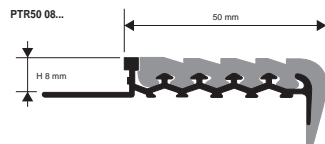
Available in the colours: G - N - B - A. The code of the selected colour must be added to the article code.
E.g.: PTR50 08... (chosen colour Grey) PTR50 08G.



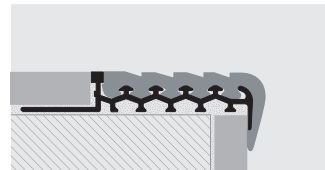
END CAP IN PVC - pack. 20 Pcs

Article	H mm		
TPPTR50...	8-10-12,5-15		

Available in the colours: G - N - B - A. The code of the selected colour must be added to the article code.
E.g.: TPPTR50 ... (chosen colour Grey) TPPTR50 G.



EXAMPLES AND INSTRUCTIONS FOR LAYING METHODS



1: Choose a PROSTAIR 50 height and color corresponding to the thickness of the tile. 2: Fix the riser laying it at the appropriate and definitive height. 3: Fill the empty spaces under the square completely with adhesive. 4: Rest the adhesive on the tread, lay the square with the base cut in the adhesive and line it up so that the square covers the tile edge of the riser. 5: Lay the tiles of the tread lining them up with upper part of the square so that it meets with the edge.

COLOURS

(for a precise assessment of colours and finishes, see the relative enclosed sheet)

G - Grey (E83)	N - Black (E85)	B - Beige (E84)	A - Ivory (E81)

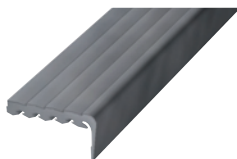
INTERCHANGEABLE INSERT for Prostair 50

VINYL RESIN

INTERCHANGEABLE VINYL RESIN / RUBBER INSERT
bar length 2,7 LM - pack. 20 Pcs - 54 LM

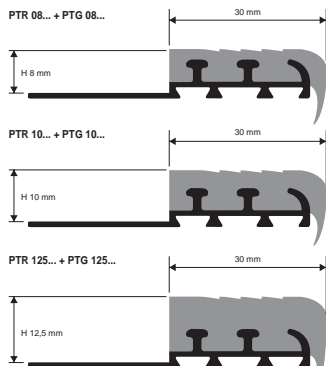
Article	H mm		
PTG50...	8-10-12,5-15		

Universal insert suitable for four profile heights.
Available in the colours: G - N - B - A. The code of the selected colour must be added to the article code.
E.g.: PTG50... (chosen colour Grey) PTG50 G.

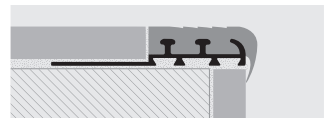


PROSTAIR

NATURAL ALUMINIUM
+ VINYL RESIN / RUBBER INSERT



EXAMPLES AND INSTRUCTIONS FOR LAYING METHODS



1: Choose the PROSTEP/PROSTAIR in the required width and colour according to the thickness of the tile. 2: First fix the riser part, placing it at the correct and final height. 3: Fill the empty spaces under the profile with the tile adhesive. 4: Apply the adhesive to the tread, lay the profile with the punched base fully sunk into the adhesive and align the profile so that its lip covers the edge of the riser tile. 5: Lay the tread tiles, aligning them so that they are flush with the upper and rear part of the profile.

PROSTAIR is a step nosing profile used to improve slip and slide resistance on the step, to protect ceramic steps and to prevent accidents. It consists of a rigid ALUMINIUM base and a changeable vinyl rubber insert available in various colours and widths. Compulsory in public environments to comply with EEC accident-prevention standards.

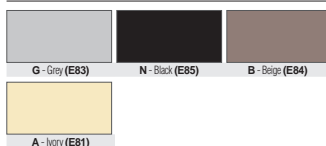


NATURAL ALUMINIUM + VINYL RESIN / RUBBER INSERT
bar length 2,7 LM - pack. 20 Pcs - 54 LM

Article	H mm		
PTR 08...	8		
PTR 10...	10		
PTR 125...	12,5		

Available in the colours: G - N - B - A. The code of the selected colour must be added to the article code.
E.g.: PTR 08... (chosen colour Grey) PTR 08G.

COLORS



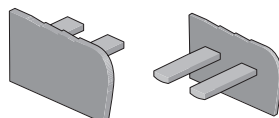
(for a precise assessment of colours and finishes, see the relative enclosed sheet)



INTERCHANGEABLE VINYL RESIN / RUBBER INSERT
bar length 2,7 LM - pack. 20 Pcs - 54 LM

Article	H mm		
PTG 08...	8		
PTG 10...	10		
PTG 125...	12,5		

Available in the colours: G - N - B - A. The code of the selected colour must be added to the article code.
E.g.: PTG 08... (chosen colour Grey) PTG 08G.



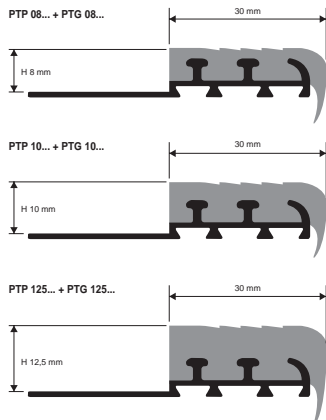
END CAP IN PVC - pack. 20 Pcs

Article	H mm		
TPTR 08...	8		
TPTR 10...	10		
TPTR 125...	12,5		

Available in the colours: G - N - B - A. The code of the selected colour must be added to the article code.
E.g.: TPTR 08... (chosen colour Grey) TPTR 08G.

PROSTEP

RIGID VINYL RESIN
+ VINYL RESIN / RUBBER INSERT



PROSTEP is a step nosing profile used to improve slip and slide resistance on the step, to protect ceramic steps and to prevent accidents. It consists of a rigid base in high-strength vinyl resin and a changeable vinyl rubber insert available in various colours and widths. Compulsory in public environments to comply with EEC accident-prevention standards.



IMPACT PROOF VINYL RESIN + VINYL RESIN / RUBBER INSERT
bar length 2,7 LM - pack. 20 Pcs - 54 LM

Article	H mm		
PTP 08...	8		
PTP 10...	10		
PTP 125...	12,5		

Available in the colours: G - N - B - A. The code of the selected colour must be added to the article code.
E.g.: PTP 08... (chosen colour Grey) PTP 08G.

COLORS

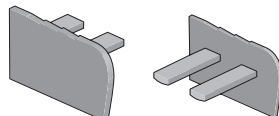


(for a precise assessment of colours and finishes, see the relative enclosed sheet)

INTERCHANGEABLE VINYL RESIN / RUBBER INSERT
bar length 2,7 LM - pack. 20 Pcs - 54 LM

Article	H mm		
PTG 08...	8		
PTG 10...	10		
PTG 125...	12,5		

Available in the colours: G-N-B-A. The code of the selected colour must be added to the article code. E.g.: PTG 08... (colour Grey) PTG 08G.



END CAP IN PVC - pack. 20 Pcs

Article	H mm		
TPTP 08...	8		
TPTP 10...	10		
TPTP 125...	12,5		

Available in the colours: G-N-B-A. The code of the selected colour must be added to the article code. E.g.: TPTP 08... (colour Grey) TPTP 08G.