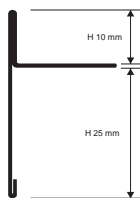


PROTERMSTEP ACC

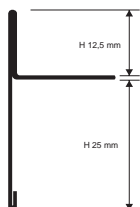
POLISHED STAINLESS
STEEL AISI 304/1.4301-V2A

PROTERMSTEP ACC is the new step cover profile made of stainless steel. Designed to protect the edge of the step and to hide the joint between the tread and the step rise. The special notched shape in the upright stem provides it with excellent anchorage between floor/glue/profile.

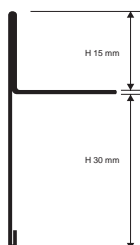
PTSPAC 10



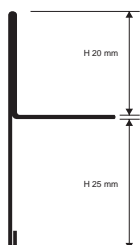
PTSPAC 125



PTSPAC 15



PTSPAC 20



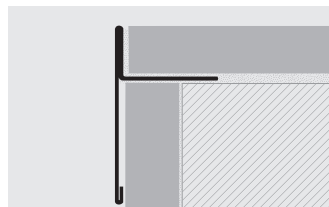
POLISHED STAINLESS STEEL AISI 304/1.4301-V2A with protective film
bar length 2,7 LM - pack. 20 Pcs - 54 LM

Article	H mm		
PTSPAC 10	10		
PTSPAC 125	12,5		
PTSPAC 15	15		
PTSPAC 20	20		

CORNER - pack. 10 Pcs

Article			
REPTSAC 10/ 125/ 15/ 20			

EXAMPLES OF LAYING



COLOURS



AC - Polished stainless steel
AISI 304/1.4301-V2A

(for a precise assessment of colours and finishes, see the relative enclosed sheet)

JOINT - H: 10 - 12,5 - 15 - 20 mm - pack. 10 Pcs

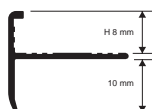
Article			
GIPTSAC 10/ 125/ 15/ 20			

PROTERMSTEP ALL

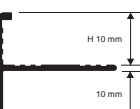
NATURAL and SILVER ANODISED
ALUMINIUM

PROTERMSTEP ALL is the new step cover profile made of natural and anodised aluminium. Designed to protect the edge of the step and to hide the joint between the tread and the step rise. The special notched shape in the upright stem provides it with excellent anchorage between floor/glue/profile.

PTSPAN/AA 08



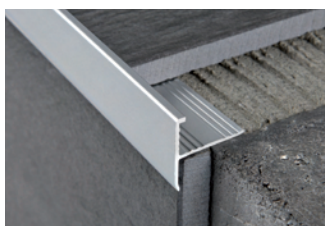
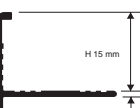
PTSPAN/AA 10



PTSPAN/AA 125



PTSPAN/AA 15



NATURAL ALUMINIUM
bar length 2,7 LM - pack. 20 Pcs - 54 LM

Article	H mm		
PTSPAN 08	8		
PTSPAN 10	10		
PTSPAN 125	12,5		
PTSPAN 15	15		



SILVER ANODISED ALUMINIUM thermo packed
bar length 2,7 LM - pack. 20 Pcs - 54 LM

Article	H mm		
PTSPAA 08	8		
PTSPAA 10	10		
PTSPAA 125	12,5		
PTSPAA 15	15		

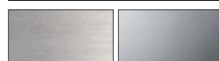
EXAMPLES OF LAYING



LAYING INSTRUCTIONS

1: Choose the PROTERMSTEP in the required width and colour according to the thickness of the tile (stairs). 2: First fix the riser part, placing it at the correct and final height. 3: Fill the empty spaces under the profile with the tile adhesive. 4: Apply the adhesive to the tread, lay the profile with the punched base fully sunk into the adhesive and align the profile so that its lip covers the edge of the riser tile. 5: Lay the tread tiles, aligning them so that they are flush with the upper and rear part of the profile and filling the internal part with adhesive.

COLOURS



(for a precise assessment of colours and finishes, see the relative enclosed sheet)