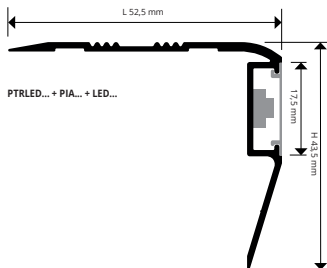
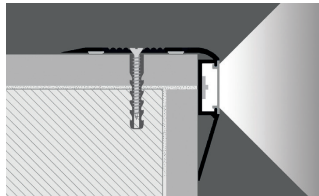


PROSTAIR LED

ANODISED SILVER ALUMINIUM
- FLAT - LED



EXAMPLES AND INSTRUCTIONS FOR LAYING METHODS



1. Choose PROSTAIR LED depending on the desired finish, light effect and polycarbonate plate; 2. If you are using the version with adhesive, clean first the surface where the profile will be installed. Once the surface has dried, remove the protective film and install the profile, applying adequate pressure on it; 3. If you are using the punched version, place the profile on the step tread and mark the position of the profile holes on the step tread; 4. Drill the step tread and fasten the profile using plugs; 5. Connect the LED to the low tension power supply and install the polycarbonate plate.

PROSTAIR LED is an aluminium profile available in the silver anodised finishes, that can be fixed with adhesive or dowels to the step tread. It has a grooved non-slip 52,5mm wide horizontal surface and an integrated LED lighting system, placed on its 43,5mm high vertical side. The integrated LED system generates cold or warm light and is protected by a matt or transparent polycarbonate plate, provided with a special fixing system, that allows it to be removed any time maintenance on the lighting system should be required. Its design and to the range of finishes available, together with its easy installation make PROSTAIR LED an appreciated solution both in public and in residential spaces.



ANODISED SILVER ALUMINIUM

bar length 2,7 lm - pack. 20 Pcs - 54 lm

ADAPTOR LED, LED & FLAT NOT INCLUDED

Article	H x L mm		
PTRLEDA 5040	43,5 X 52,5		
PTRLEDA 5040A (adhesive)	43,5 X 52,5	22,50	
PTRLEDA 5040F (punched)	43,5 X 52,5	21,00	

ADHESIVE FLEXIBLE LED COIL

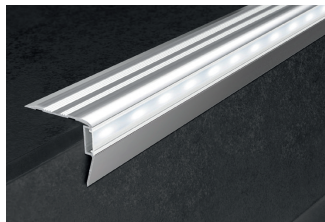
length 5 lm - pack. 1 ROLL

Article		
LEDN (neutral light)		
LEDF (cold light)		
LEDC (hot light)		

COLOURS



AA - Anodised silver alum.



POLYCARBONATE'S FLAT

bar length 2,7 lm - pack. 20 Pcs - 54 lm

Article	Finish		
PIAL 17	transp.		
PIAO 17			

ENDCAPS- R / L (3 R and 3 L)

Article	H x L mm		
TPTRLEDA 5040/3	43,5 X 52,5		



LED ADAPTOR AC/DC 75W - 12V (15 lm)

Article	
ALL 7512 (supplies 15 lm)	

LED ADAPTOR AC/DC 25W - 12V (5 lm)

Article	
ALL 2512 (supplies 5 lm)	

