

PRINTER MARBLE. A range of transition profiles made in non-toxic impact-resistant PVC coated with a strong decorative marbled PVC film in 12 finishes, designed to comply with hygiene standards. Ideal for joining inside corner joints between wall coverings in tiles and marble, allowing the necessary expansion in the inside corners to an adjacent structure. The profile with punched/perforated flange must be applied under the wall or floor tile. This profile makes cleaning easy by preventing dust, dirt and damp from accumulating in the corner. Available in the heights 6, 8 and 10 mm. Match with **PROJOLLYMARBLE** (for outside corners and edges) and with **PROLISTELMARBLE** (strips/pencil strips).

PRINTER MARBLE

IMPACT-RESISTANT NON-TOXIC VINYL RESIN (PVC) 12 MARBLE FINISHES



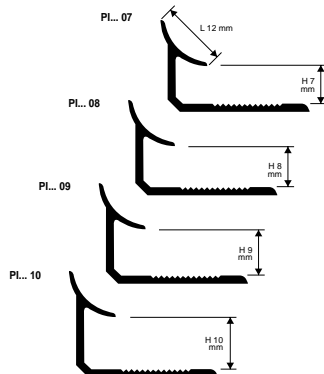
MARbled NON-TOXIC VINYL RESIN
bar length 2,7 LM - pack. 40 Pcs - 108 LM

Article	H mm
PI... 07	7
PI... 08	8
PI... 09	9
PI... 10	10

**PI 07... e PI 09...
PRODUCTION ON REQUEST**

MINIMUM QUANTITY 5400 LM by colour and height (delivery time to be agreed)

Available in the colours: MC-MB-MR-MA-MV-MVA-MAS-MBS-MRS-MVAS-MTC-MTS (MAB-MABC-MABO-MAM-MDB-MC-MCRC-MBDX-MGV-MVA-MVSB-MVBL available upon request with a minimum quantity order of 5400 LM). The code of the selected colour must be added to the article code. E.g.: PI... 07 (chosen colour White Carrara) PIMC 07.



COLOURS

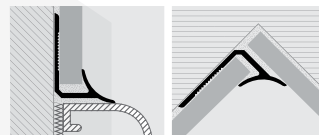
(for a precise assessment of colours and finishes, see the relative enclosed sheet)



AVAILABLE minimum quantity 5400 LM by colour and height (delivery time to be agreed)



EXAMPLES AND INSTRUCTIONS FOR LAYING METHODS



1: Choose the "PRINTER" with suitable height for the thickness of the covering. 2: Apply the adhesive onto the area of application of the profile. 3: Lay and align the profile, cut to the necessary length, pressing the perforated flange into the adhesive. 4: Lay the tiles under the curvature of "PRINTER" and align them so that the outer curved part of the profile covers the perpendicular tiles. 5: Fill the profile/tile area of contact with adhesive to prevent the accumulation of water in any voids. (When laying on bathtubs, sanitary ware and shower trays, fill the rear part of the profile on both sides with silicone to prevent infiltration of water).