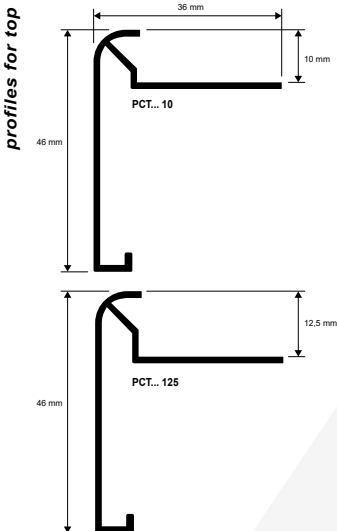


PROTOP

ANODISED SILVER and POLISHED TITANIUM ALUMINIUM

Profile for kitchen countertops.



INSTRUCTIONS FOR LAYING METHODS

1: Choose the PROTOP with a height suited to the thickness of the covering. 2: Apply sealant to the profile application area. 3: Lay the profile cut to the required length and align it, pressing the perforated flap into the sealant. 4: Lay the tiles, aligning them in such a way that the upper part of the profile closes flush. 5: Fill the contact area between the profile and tile with sealant to prevent water from collecting into the empty spaces.

ANODISED SILVER ALUMINIUM
bar length 2,7 LM - pack. 20 Pcs - 54 LM

Article	H mm		
⊕ PCTAA 10	10		
⊕ PCTAA 125	12,5		

POLISHED TITANIUM ALUMINIUM
bar length 2,7 LM - pack. 20 Pcs - 54 LM

Article	H mm		
⊕ PCTBT 10	10		
⊕ PCTBT 125	12,5		

IN / OUTSIDE CORNER
ANODISED SILVER ALUMINIUM - pack. 10 Pcs

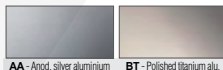
Article			
⊕ EPCTAA 90 (outside 90°)			
⊕ IPCTAA 90 (inside 90°)			
⊕ EPCTAA 135 (outside 135°)			
⊕ IPCTAA 135 (inside 135°)			

IN / OUTSIDE CORNER
POLISHED TITANIUM ALUMINIUM - pack. 10 Pcs

Article			
⊕ EPCTBT 90 (outside 90°)			
⊕ IPCTBT 90 (inside 90°)			
⊕ EPCTBT 135 (outside 135°)			
⊕ IPCTBT 135 (inside 135°)			

COLOURS

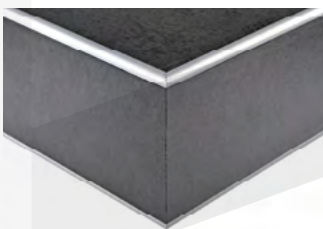
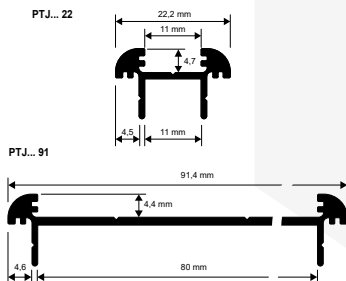
(for a precise assessment of colours and finishes, see the relative enclosed sheet)



PROTECT J

ANODISED SILVER and CHROMED POLISHED ALUMINIUM

PROTECT J is a profile designed to protect edges and angles of low thickness (3/4.5 mm) coverings. It prevents chipping panel, door, and kitchen countertop edges with rounded jolly profiles.



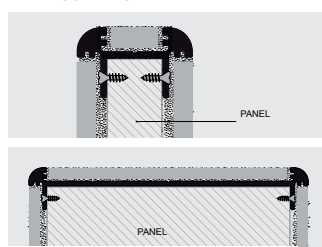
ANODISED SILVER and CHROMED POLISHED ALUMINIUM
bar length 2,7 LM - pack. 20 Pcs - 54 LM

Article	L mm		
⊕ PTJAA 22	22		
⊕ PTJBC 22	22		
⊕ PTJAA 91	91		
⊕ PTJBC 91	91		

INSTRUCTIONS FOR LAYING METHODS

1: Choose the Protect J of the required type and colour. 2: Drill and fasten it to the panel and/or substrate by means of screws. 3: Spread glue in the area where the covering will be laid. 4: Cut the covering and lay it in such a way that the upper part of the profile closes flush. 5: Fill the contact area between the profile and tile with sealant to prevent water from collecting into the empty spaces.

EXAMPLES OF LAYING



COLOURS

(for a precise assessment of colours and finishes, see the relative enclosed sheet)



AVAILABLE ALSO IN THE OTHER FINISHINGS OF ALUMINIUM
(minimum quantity order of 500 LM)