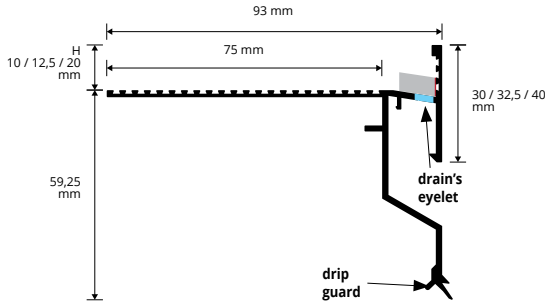


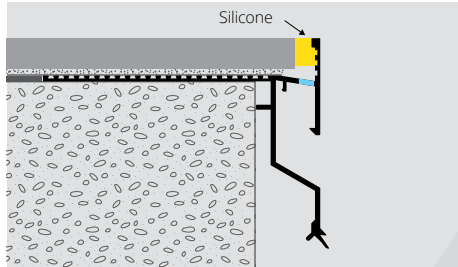
PROTERRACE DRAIN DRIP

VARNISHED/COATED ALUMINIUM

PFDPP ... AL...

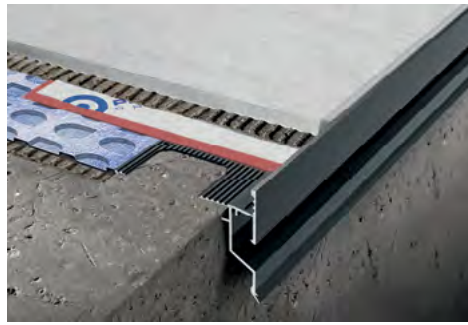


EXAMPLES AND INSTRUCTIONS FOR LAYING METHODS



1. Choose PROTERRACE DRAIN DRIP according to the tile thickness and desired colour.
2. Fix the external corners to the screed (at least 1 cm from it) with nails.
3. Fix the draining adhesive stripe in polyurethane on the vertical side of the profile.
4. Cut the PROTERRACE DRAIN FDP at desired length joining it to the corners using the linking elements and fix it with nails to the substrate.
5. Lay the desired waterproofing system.
6. Lay the tiles leaving at 5 mm between the tile and the profile.
7. Seal the space between tile and profile with PROBAND FIX.

PROTERRACE DRAIN DRIP is an edging profile in varnished aluminium, designed to protect the edges of the tiles on terraces and balconies and to allow the downflow of water. The profile is provided with a flange that ensures the right fixing and an adhesive stripe in open cells polyurethane, which protect the outflow holes to be closed by silicone.



VARNISHED/COATED ALUMINIUM

bar length 2,7 lm - pack. 5 Pcs - 13,5 lm

Article	H mm
PFDPP 10AL...	10
PFDPP 125AL...	12,5
PFDPP 20AL...	20

Available in the colours: BF - GF - A (EF - C - TF on demand). The code of the selected colour must be added to the article code. E.g.: PFDPP 10 AL... (white) PFDPP 10 ALBF.

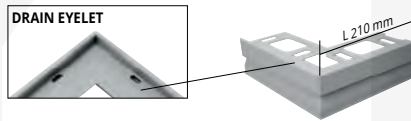
EMBOSSED COLOURS

BF - White (9010)	GF - Gray (7038)	A - Anthracite grey (no RAL)
-------------------	------------------	------------------------------

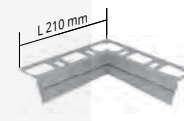
* COLOURS ON DEMAND

EMBOSSED		
EF - Beige (1019)	C - Corten	TF - Dark brown (8019)

DRAIN EYELET



AEPFDPP 10/125/20AL...



AIPFDPP 10/125/20AL...



GINFDPP 10/125/20AL .../1

EXTERNAL CORNERS - pack. 10 Pcs

Article
AEPFDPP 10AL...
AEPFDPP 125AL...
AEPFDPP 20AL...

INTERNAL CORNERS - pack. 10 Pcs

Article
AIPFDPP 10AL...
AIPFDPP 125AL...
AIPFDPP 20AL...

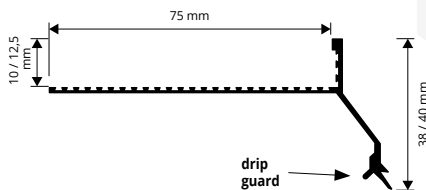
JOINTS - pack. 1 upper + 1 lower

Article
GINFDPP 10AL .../1
GINFDPP 125AL .../1
GINFDPP 20AL .../1

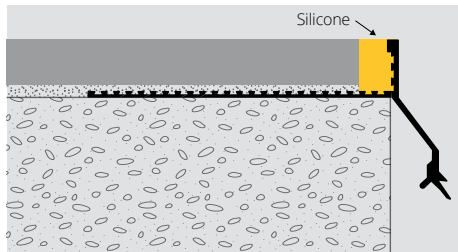
PROTERRACE ECO DRIP

VARNISHED/COATED ALUMINIUM

PTEDP ...



EXAMPLES AND INSTRUCTIONS FOR LAYING METHODS



1. Choose "PROTERRACE ECO DRIP" according to the tile thickness.
2. Cut "PROTERRACE ECO DRIP" to the desired length and fix it to the support with nails.
3. Apply the desired waterproofing system, sealing the joint between profile and waterproofing.
4. Lay the tiles, leaving about 5 mm between tiles and profile.
5. Seal the space between tiles and profile using PROBAND FIX.

PROTERRACE ECO DRIP is an edging profile in aluminium designed to protect the front of the screed from water penetration and the edges of the tiles laid on terraces and balconies. The profile is equipped with a punched flange that ensures its fixing to the support. The front the profile is equipped with a double drip to improve the push away of water from the wall.



VARNISHED/COATED ALUMINIUM

bar length 2,7 lm - pack. 20 Pcs - 54 lm

Article	H mm
PTEDP 10AL...	10
PTEDP 125AL...	12,5

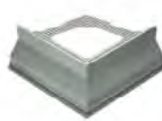
Available in the colours: GF - A. The code of the selected colour must be added to the article code. E.g.: PTEDP 10AL... (gray) PTEDP 10GFAL.

EXTERNAL CORNER - pack 10 Pcs

Articolo	pz	conf.
AEDDP 10AL...		
AEDDP 125AL...		

JOINTS - pack. 2 / 10 Pcs

Article	pack. 2Pcs	pack. 10Pcs
GINEDP 10AL... /...		
GINEDP 125AL... /...		



AEDDP 10/125ALGF



GINEDP 10/125ALGF



AEDDP 10/125ALA



GINEDP 10/125ALA

= News 2020

= Production on demand with minimum quantity of 100 pcs. Production delay 4/5 weeks. Price to be agreed