

PROSEAL 50 is a cove-shaped profile in shockproof non - toxic coextruded coloured vinyl resin particularly suitable to ensure cleanliness and hygiene in public and industrial environments. Its particular section and the availability in two different colours and special pieces, such as internal and external corners, end caps and joints, make **PROSEAL 50** a much sought-after profile that allows a workmanlike application.

PROSEAL 50

SHOCKPROOF NON - TOXIC COEXTRUDED
COLORED VINYL RESIN



COEXTRUDED VINYL RESIN NON-TOXIC SHOCKPROOF
bar length 3,5 lm

| Article | | |
|-------------|-----------------------------|--|
| PSA 50-... | pack. 40 lm | |
| PSAA 50-... | pack. 30 lm (with adhesive) | |

Available in the colours: 01 - 03 (on demand 04).
The code of the selected colour must be added to the article code.
E.g.: PSA 50-... (chosen colour white) PSA 50-01.

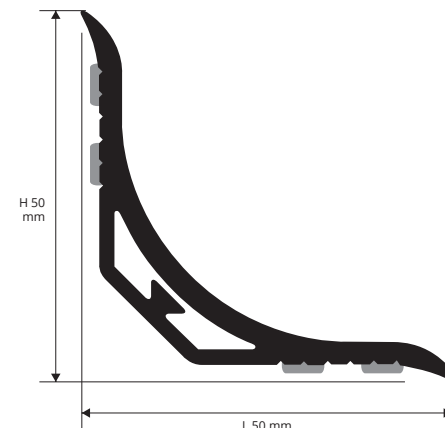
COLOURS

| | |
|------------|------------------|
| | |
| 01 - White | 03 - Cement Grey |

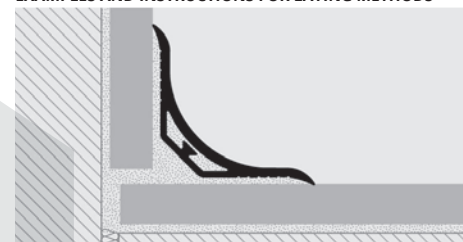
AVAILABLE MINIMUM QUANTITY 100 Pcs per colour and height
(Price and delivery time to be agreed)

| |
|------------------|
| |
| 04 - Light Beige |

PSA 50-... / PSAA 50-...



EXAMPLES AND INSTRUCTIONS FOR LAYING METHODS



1. Choose "PROSEAL 50" according to the tile thickness and desired finish. 2. Cut "PROSEAL 50" to the desired length. 3. Remove carefully any remains of oil, fat and dirt from the surface where the profile will be laid. 4. When the surface is perfectly dry, remove the protective film (version with adhesive), place the profile and press it without hitting / apply the double-sided butyl tape on the back of the profile (version without adhesive), apply the silicone along the floor-wall joint and place the profile.

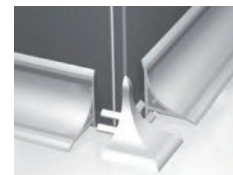
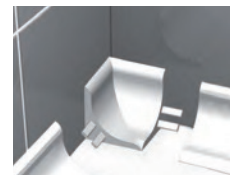
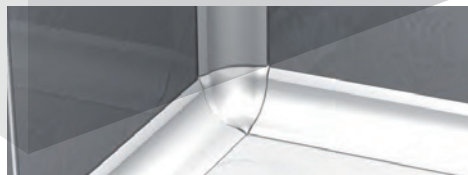
CORNERS and END CAPS

NON - TOXIC VINYL RESIN

INTERNAL / EXTERNAL CORNER AND END CAPS (PROSEAL 50)

| Article | Pack. 2 Pcs | Pack. 10 Pcs |
|------------------------------|----------------|-----------------|
| TRI 50-... (internal corner) | | |
| TRE 50-... (external corner) | | |
| TRT 50-... (three-ways) | | |
| TRC 50-... (end cap) | | |
| TGN 50-... (joints) | | |

Available in the colours: 01 - 03 - 04.
The code of the selected colour must be added to the article code.
E.g.: TRI 50-... (chosen colour white) TRI 50-01.
Choose the desired packaging. Ex. TRI 50-01/10 (pack. 10 Pcs)
TRI 50-01/2 (pack. 2 Pcs)



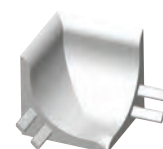
EXTERNAL CORNER

THREE WAYS

END CAP

JOINTS

INTERNAL CORNER



TRE 50-.../...

TRT 50-.../...

TRC 50-.../...

TGN 50-.../...

TRI 50-.../...