

BUILDING  
COMMON GROUND



**Tubbox®**

Column formers



MAX FRANK

BUILDING  
COMMON GROUND

**Tubbox<sup>®</sup>**

Column formers



## Tubbox® column formers

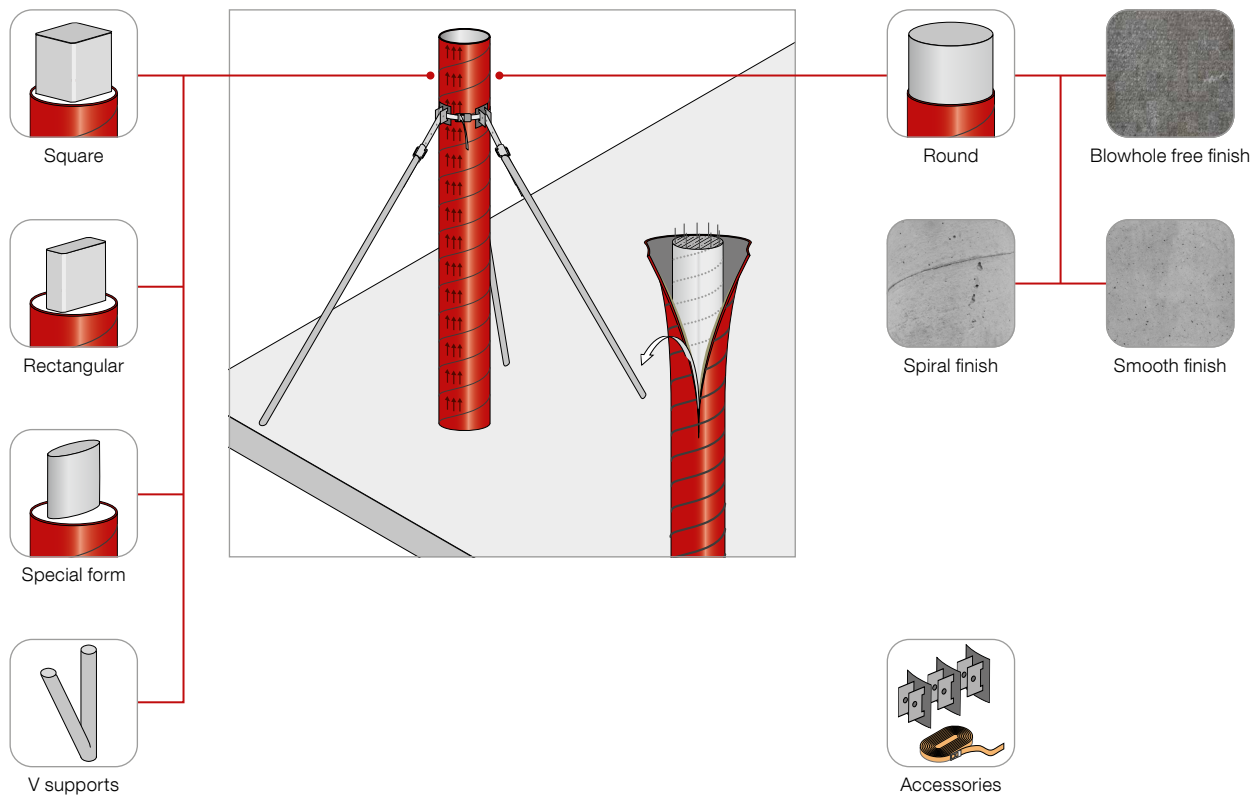
### Formwork for concrete columns

Concrete columns can be produced in different geometries and surface qualities with Tubbox® column formers. They are a time-saving and cost-effective alternative to conventional column formwork.

The disposable cardboard column formers are equipped with a ripcord for easier demoulding.

#### ★ Advantages

- Fast set up and stripping accelerates construction
- Easy and handy for transport and installation
- Eliminates time and costs of cleaning and return transport
- Several columns can be produced in one concreting day
- No concrete release agent required



## Product variants

### Tubbox® column formers – angular

#### for square and rectangular columns

Special coated inserts in the Tubbox® „straight-edged“ column formers allow the production of columns with square or rectangular cross sections.

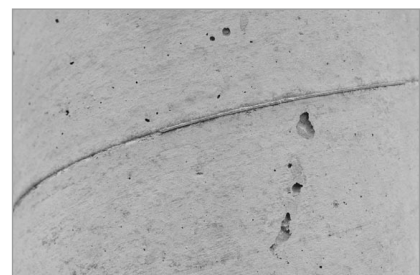
The column form has chamfered edges as standard, special versions are available on request.



### Tubbox® column formers – smooth finish

#### for circular columns

Use of a plastic insert in Tubbox® column formers creates a „smooth“ concrete surface with occasional blowholes



## Tubbox® column formers – blowhole-free finish

### for circular columns

In Tubbox® „blowhole-free“ column formers, the inserted Zemdrain® CPF liner ensures a largely blowhole-free surface and increases the surface hardness of the edge-concrete layer.

Overlap of the Zemdrain® liner is visible.



## Tubbox® column formers – custom shapes

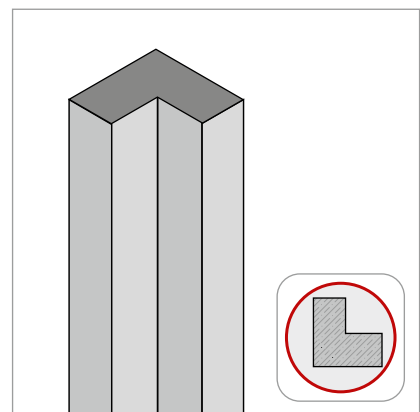
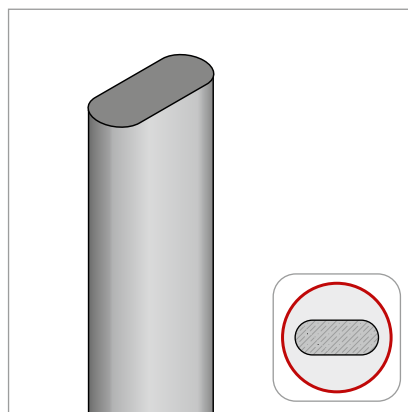
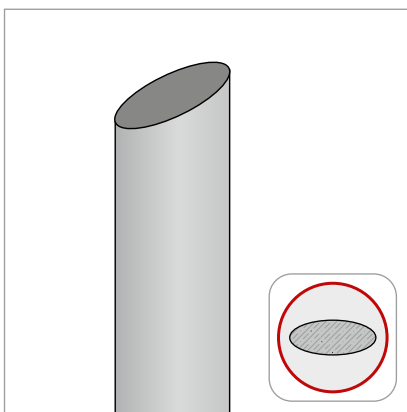
### for individual cross-sections as well as conical and angled columns

In addition to round and rectangular concrete columns, Tubbox® column formers are available in a variety of special forms:

- custom cross sections, e.g. ellipses, polygons, L-shapes
- conical columns
- angled columns
- With integrated thermal insulation



Realization of individual requirements possible after technical approval.



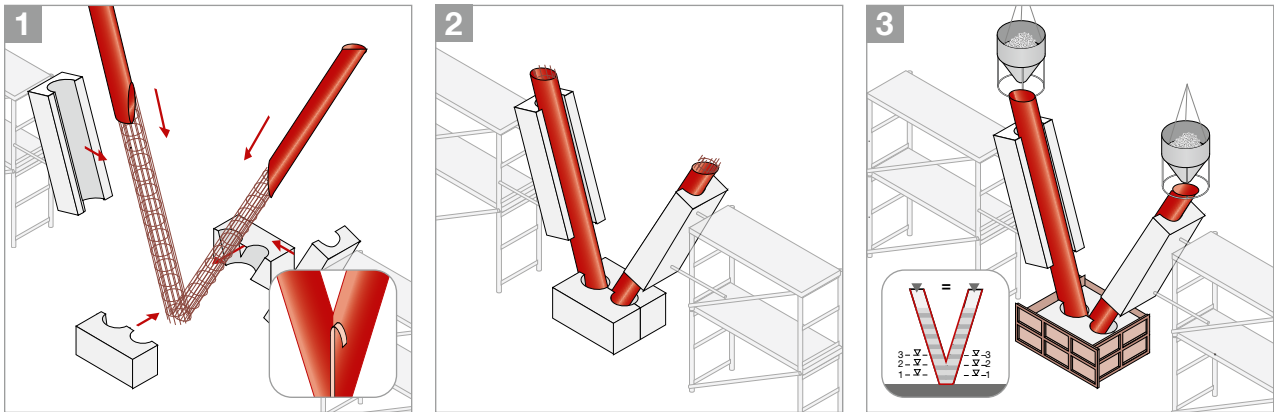
## How to

### Formwork for V-columns and inclined columns

V-columns or inclined columns are created as a special architectural design feature or according to specifications. The intersection is possible at the column head as well as at the base. With both variants, a neat finish is created with Tubbox® forming tubes.

Pre-assembled during the manufacturing process, and together with EPS fixings, Tubbox enable a fast and secure shuttering solution.

#### How to:

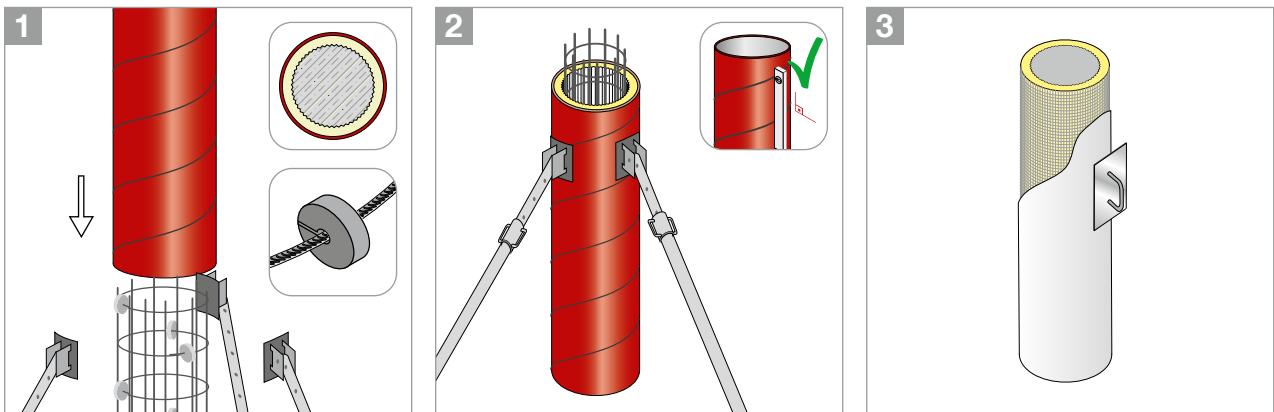


### Insulating circular columns

Where insulation is required, it is often incorporated after concreting. For columns, this can be a complex task due to the geometry.

When using Tubbox column formers, the thermal insulation can be integrated during the manufacturing process. The insulation, made of extruded polystyrene, forms an optimal bond to the fresh concrete due to its shape.

#### How to:







**Max Frank GmbH & Co. KG**

Mitterweg 1  
94339 Leiblfling  
Germany

Tel. +49 9427 189-0  
Fax +49 9427 1588

[info@maxfrank.com](mailto:info@maxfrank.com)  
[www.maxfrank.com](http://www.maxfrank.com)